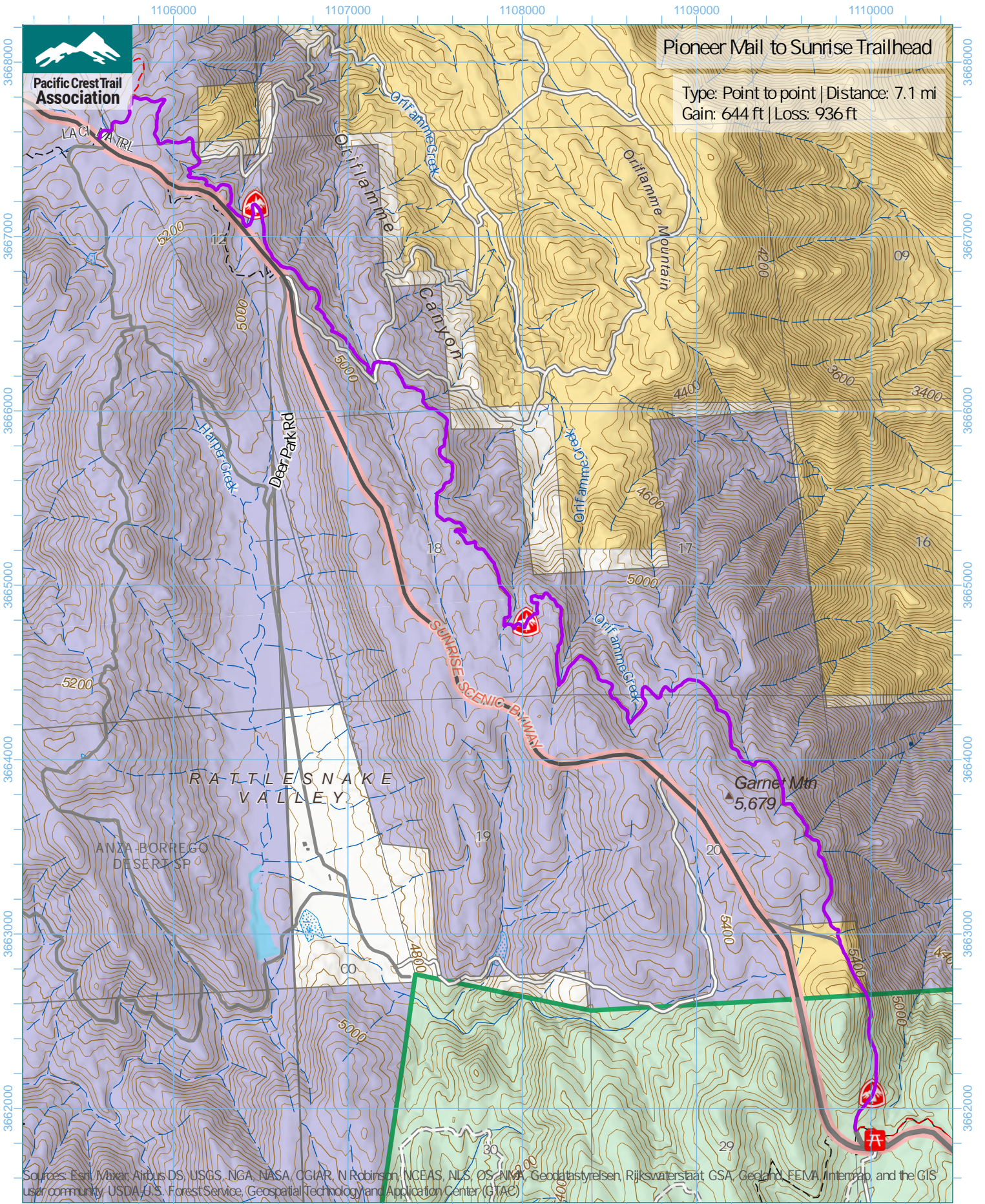


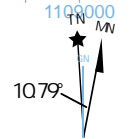
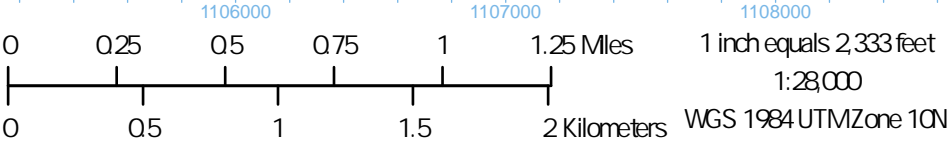
Pioneer Mail to Sunrise Trailhead

Type: Point to point | Distance: 7.1 mi
Gain: 644 ft | Loss: 936 ft

Pacific Crest Trail Association



Sources: Esri/Mxar/Airbus DS/USGS, NGA, NASA, CGIAR, N Robinson, NCEAS, NLS, OS, NIMA, Geodatasystemen, Rijkswaterstaat GSA, Geoland, FEMA, Intermap, and the GIS user community, USDA, U.S. Forest Service, Geospatial Technology and Application Center (GTAC)



Trip data by PCTA
Basemap by US Forest Service
Contour interval: 40ft